



# First Mate II

Handheld Thermal Night Vision Cameras

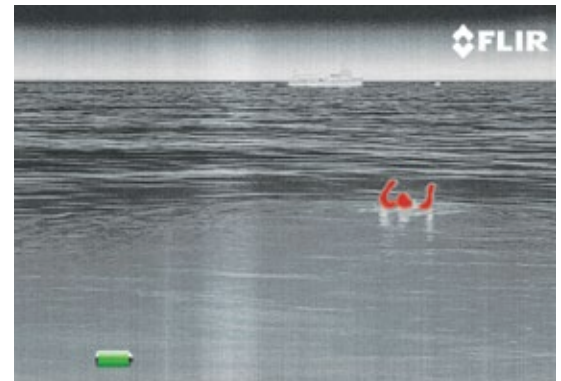


# See at Night.

## More affordable. More features.

First Mate II thermal imaging cameras make pictures from heat, not light. So no matter how much light is available – from pitch black to moonlight to severe midday glare – thermal imagers display clear infrared video. In complete darkness, you can see other vessels, landmarks, rocks, buoys, floating debris and other obstacles.

First Mate II's new **InstAlert™** feature highlights the hottest objects in a scene in red. This is extremely valuable when you're trying to avoid hazards in your path or in crew overboard situations, when time is of the essence to save a life.



Seeing Red: First Mate II's new **InstAlert** Detection

## First Mate II MS-Series

Ultra-compact yet loaded with features, First Mate II MS-Series literally fits in the palm of your hand. Choose from two models:

- MS-224 includes a 240 x 180 infrared detector and freeze frame functionality
- MS-324 includes a 320 x 240 infrared detector and 2x E-zoom
- Both have White Hot, Black Hot and InstAlert palettes

Learn more: [www.FLIR.com/MS-Series](http://www.FLIR.com/MS-Series)

## Detection Range Performance†

### MS-224



### MS-324



† = Actual object detection range performance may vary depending on camera setup, environmental conditions, and user experience. All specifications are subject to change without notice. Visit [www.FLIR.com/Maritime](http://www.FLIR.com/Maritime) for the most up-to-date specifications.

## InstAlert



# Stay Safe.



## First Mate II HM-Series

With the HM-Series, you get everything the MS-Series has to offer, plus the ability to store still images and video on an SD card.

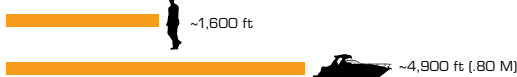
- White Hot, Black Hot and InstAlert palettes
- 4 rechargeable AA NiMH batteries (also runs on Li-Ion and Alkaline)
- Video out through RCA Jack

Learn more: [www.FLIR.com/HM-Series](http://www.FLIR.com/HM-Series)



### Detection Range Performance<sup>†</sup>

#### HM-324 XP+



#### HM-307 XP+ (7° Lens)



## First Mate II BHM-Series

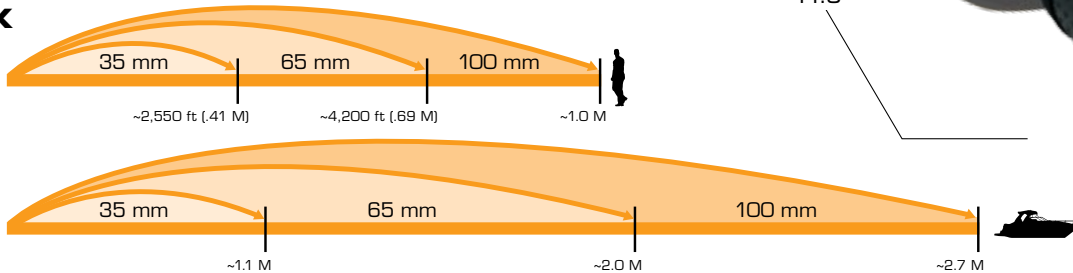
Bi-ocular comfort, long-range viewing capability, and the option of 640 x 480 resolution make First Mate II BHM-Series a valuable accessory to anyone who spends more time on the water than they do on land.

- White Hot, Black Hot and InstAlert palettes
- Lenses sold separately (choose from 35 mm, 65 mm or 100 mm)
- 4 rechargeable AA NiMH batteries (also runs on Li-Ion and Alkaline)

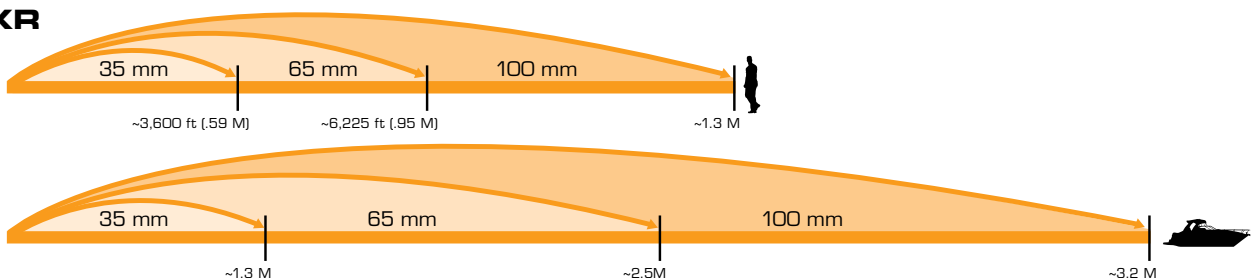
Learn more: [www.FLIR.com/BHM-Series](http://www.FLIR.com/BHM-Series)

### Detection Range Performance<sup>†</sup>

#### BHM-X



#### BHM-XR





## First Mate II

Specification	MS-Series (MS-224 & MS-324)	HM-Series (HM-224, HM-224 Pro, HM-324 XP+ & HM-307 XP+)	BHM-Series (BHM-X & BHM-XR)
<b>Resolution</b>	240 x 180 or 320 x 240	240 x 180 or 320 x 240	320 x 240 (X) or 640 x 480 (XR)
<b>Field of View</b>	24° x 18°	HM-224, HM-224 Pro & HM-324 XP+: 19 mm: 24° x 18° with optional 2x Extender: 12° x 9°  HM-307 XP+: 65 mm: 7° x 5°	X: 35 mm: 13° x 10° 65 mm: 7° x 5° 100 mm: 5° x 3°  XR: 35 mm: 18° x 14° 65 mm: 10° x 8° 100 mm: 6° x 4°
<b>E-Zoom</b>	MS-324: 2x	2x (not available on HM-224)	X: 2x; XR: 2x & 4x
<b>Video Out</b>	N/A	NTSC or PAL through RCA jack	NTSC or PAL through RCA jack
<b>Data Storage</b>	N/A	HM-224: N/A HM-224 Pro, HM-324 XP+ & HM-307 XP+: Store still images and video on SD card	Store still images and video on SD card
<b>Battery Type/Operating Life Per Charge</b>	Rechargeable Internal Li-Ion Battery/5-7 hours nominal	4 rechargeable AA batteries; NiMH (included), Li-Ion, or Alkaline/ >5 hours (NiMH)	4 rechargeable AA batteries; NiMH (included), Li-Ion, or Alkaline/ >5 hours (NiMH)
<b>Operating Temperature</b>	-4°F to 122°F (-20°C to 50°C)	HM-224 & HM-224 Pro: 32°F to 122°F (0°C to 50°)  HM-324 XP+ & HM-307 XP+: -4°F to 140°F (-20°C to 60°C)	-4°F to 140°F (-20°C to 60°C)
<b>Weight</b>	12.9 oz.	HM-224, HM-224 Pro, HM-324 XP+: 1.45 lbsv.  HM-307 XP+: 2.2 lbs.	w/ 35 mm: 2.84 lbs. w/ 65 mm: 3.05 lbs. w/ 100 mm: 3.06 lbs.
<b>Environmental Rating</b>	IP-67	IP-67	IP-67 (camera body only)
<b>Size (L x W x H)</b>	6.70" x 2.31" x 2.44"	HM-224, HM-224 Pro, HM-324 XP+: 9.36" x 3.30" x 2.60"  HM-307 XP+: 11" x 3.33" x 2.62"	w/ 35 mm: 10.5" x 6.5" x 2.6" w/ 65 mm: 11.5" x 6.5" x 2.6" w/ 100 mm: 13.0" x 6.5" x 2.6"
<b>Warranty</b>	2-Year Standard (free upgrade to 3-Year Extended after product registration)		

For complete specifications on each camera model, please visit: [www.FLIR.com/Maritime](http://www.FLIR.com/Maritime)



PORTLAND  
Corporate Headquarters  
FLIR Systems, Inc.  
27700 SW Parkway Ave.  
Wilsonville, OR 97070  
USA  
PH: +1 877.545.5094

NASDAQ: FLIR